



WE ARE  
CLAPTON CFC  
ALWAYS  
ANTIFASCIST



**CLAPTON CFC vs  
RICHMOND PARK FC**

**2.00PM DECEMBER 10, 2023**

**OLD SPOTTED DOG**

**London & South East Regional  
Women's League Division One North**

## FIRST VISIT

WE WELCOME RICHMOND PARK here for the first time after an unusual double header at their home last season. We're towards the end of a seemingly endless run of home games - seven out of eight - thanks to everyone who has come out to watch.

**CLAPTON CFC**



## RICHMOND PARK FC

LONDON & SOUTH EAST REGIONAL  
WOMEN'S LEAGUE DIVISION ONE NORTH

RICHMOND PARK FC IS A COMMUNITY FOOTBALL club for Kingston, Ham and Richmond. The women's first team formed for the 21/22 season and won the new Surrey FA Women's League with a 100% record. Last season they finished in tenth place in their first at this level. This season they've moved to Tolworth.

### PREVIOUS MEETINGS

This will be the first meeting at the Old Spotted Dog Ground. Last season's games were played on the same day, back to back, at Richmond Park's then home at Hampton & Richmond Borough. The first of the games - shortened to 60 minutes - ended 0-0 then we won the second 2-1 thanks to a brace from Maria Mendonca.

### FORM GUIDE

Richmond Park are two places below us but are in form with three wins in the last five league and cup games, having lost every match up until then. CCFC meanwhile only played one league game since October having been involved in cup games and hit by postponements.

### PLAYERS TO WATCH

Former Clapton defender Phoebe Parthews is registered with Richmond Park but hasn't played this season. Last season's top scorer Lauren Hawkey - the third best in the division - is now playing in America. In her place, Jesina Bansoodeb is leading the way with five goals so far. They are a young, talented team who are quickly adapting to adult football.



### CONGRATS ELLIE AND JULIE

Clapton CFC coaches Ellie Guedalla (right) and Julie Leaff have been honoured by the London FA. Ellie and Julie are the co-founders and coaches of our 'Open Access' team and training, for women and non-binary people of all ages, targeting beginners, those returning to the game or have been marginalised from football. They set up the session back in 2019, running sessions every Saturday morning rain or shine. Since then they have coached over 300 players, fielded five-a-side teams in the Super 5 League, run several tournaments and developed several players into CCFC's development and first teams.

### MEET THE CAGEFIGHTERS

Meet our latest 5-a-side team - the Clapton Cagefighters! Coached by Julie and Jalina and born out of Open Access, this spirited group have been having a great run of form in division 5 of the Super5 League at Mabley Green. The



"Cage" is the team's affectionate name for the newcomer pitch at Open Access, where Julie has trained up this new group.



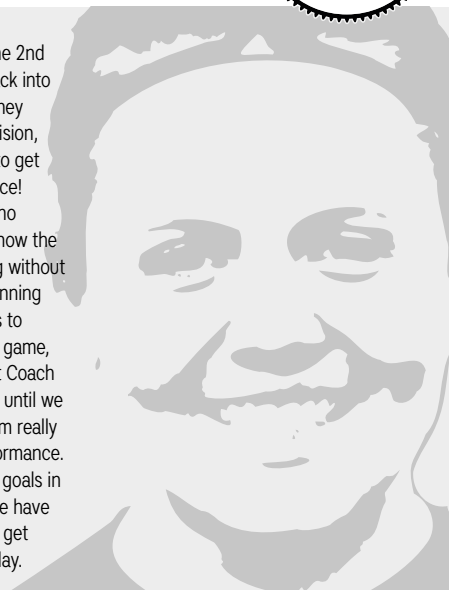
## VERITY PHILLIPS FIRST TEAM CAPTAIN

IT'S OUR PENULTIMATE GAME before the Christmas break, and today we are back to league action hosting Richmond Park at the Old Spotted Dog. Last week was a nine goal thriller cup match, where we narrowly lost 5-4 to Denham United. A disappointing result given we had the lion's share of chances in the first half, but weren't quite as clinical as we needed to be to put them away. First half ended 2-1 to Clapton.

In the second half Denham came out strong, at one point playing five (yes, five) up top. A formation we're not really used to defending against, and frustratingly it worked for them. The added pressure

meant we conceded in the 2nd half and allowed them back into the match. Fortunately, they are also in our league division, so plenty of opportunity to get revenge... watch this space!

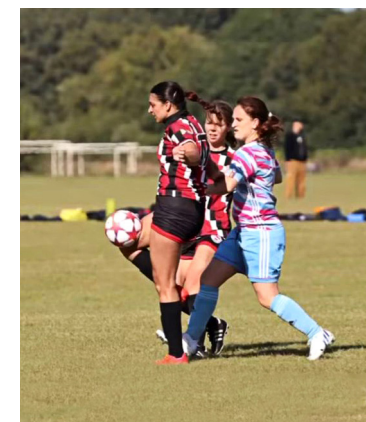
However, those fans who attended last week will know the W1T are currently playing without a Head Coach. We are running our own training sessions to focus on key parts of our game, with the help of Assistant Coach Brian Bramble on Sunday until we recruit. Despite all this, I'm really pleased with recent performance. The team has scored ten goals in our last two games, so we have plenty of optimism as we get back to league action today.



## PLAYER PROFILE: MOZAIEN TAK

**PLACE OF BIRTH:** Delhi, India  
**HEIGHT:** 5.8 ft  
**WHERE YOU LIVE:** Hackney  
**DAY JOB:** Student! - Masters in Development Economics at SOAS  
**PREVIOUS CLUBS:** Played at a state level in India - have played for Delhi  
**ALL TIME FAVOURITE PLAYER:** Eden Hazard, Mo Salah, Sam Kerr  
**FAVOURITE TEAM, APART FROM CLAPTON CFC:** Chelsea WFC  
**BIGGEST HIGH IN FOOTBALL:** Scoring headers, always  
**LOWEST POINT IN FOOTBALL:** The first (and hopefully last)

time my team and I lost 7-0 in five a side football  
**LIKES AND HOBBIES:** Reading, watching too many movies to the point I've become a movie buff  
**FAVOURITE COUNTRY VISITED:** Mauritius  
**FAVOURITE FOOD:** Noodles of any kind  
**FAVOURITE FILM:** V for Vendetta  
**FAVOURITE TV:** Fleabag  
**FOOTBALLING AMBITION:** Steadily improving and becoming a bigger part of the team wins!  
**PERSON YOU'D MOST LIKE TO MEET:** Sam Kerr





# CCFC

## GOALKEEPERS

PAULA GRIFFIN  
CHELSIE SPARKS

## DEFENDERS

ELIZABETH ATOYEBI  
COCO BRIDEN  
MIM CHADWICK  
RUBY EARLE  
LENNY HOLMES  
ANNIE LYONS  
LESLEY MCGOWAN  
VERITY PHILLIPS  
ALLANA SCOBLE  
LILY SMITH

## MIDFIELDERS

ANA HOLMES  
LI STEINER  
MARTA BOIRO  
CIARA MONAHAN  
LUCY SPOURS  
LARISSA VIEIRA  
RHIANNE WRIGHT

## FORWARDS

TEJU CALLISTO  
MARTA CASANOVAS  
EMILY LINK  
MARIA MENDONCA  
HARRIET PLOWS  
LIRIAN SANTOS  
MOZAIEN TAK

## RICHMOND PARK

- > Angel
- > Acheampong
- > Jesina Bansoodeb
- > Sigourney Dawson
- > Hiorrany Delfino
- > Carolin Engelhard
- > Caitlin Fennelly-taylor
- > Rylan Gray
- > Alina Kerl
- > Catherine King
- > Gemma Lambert
- > Amanda O'Neil
- > Emily Osborn
- > Mia Patton
- > Olivia Rickards
- > Jasmeena Syed
- > Zuzanna Wojtaszewska

## WE ARE THE CLAPTON CCFC

- We accept that each of us is individually responsible for our own actions and we are collectively responsible for supporting those around us.
- We start from a position of believing and supporting people when they share their experiences with us.
- We accept that other people's lives and histories are invariably different to our own and try to avoid making assumptions about the opinions, background, cultures and identities of others.
- We try not to judge, compete or put each other down.
- We approach every situation with an open mind.
- We notice and respect each other's physical boundaries and understand the importance of always checking first before crossing them.
- We are mindful of the space we take up and if we are used to talking, we also need to listen to the wisdom that others bring to our organising and discussions.
- We try to communicate in an open, clear and uncomplicated way. We are aware of how the language we use can shut down other people's opinions and exclude participation, even when we do not intend to do so.
- Accountability means that each of us is ready, when challenged about how we act and how we speak, to take on board other's points of view, take responsibility for our actions and make amends in the ways that are asked of us. This accountability is also expected of people and groups working with us.
- If we witness actions or behaviour that is harmful, oppressive or discriminatory, we will challenge it constructively and not leave this to those who are most affected by it or assume others will deal with it.

## UPCOMING FIXTURES

### WOMEN'S FIRST TEAM

DATE	TIME	COMP	OPPONENTS/VENUE
Dec 17	2pm	LSERWFL	(H) Ashmount Leigh (at Old Spotted Dog Ground)
Jan 14	2pm	LSERWFL	(A) Camden & Islington United (at Regents Park)
Jan 21	2pm	CC	(A) Hackney (at Wadham Lodge 3G, Walthamstow)
Jan 28	2pm	LSERWFL	(A) AFC Whyteleafe (at Church Road)
Feb 11	2pm	LSERWFL	(A) Actonians Reserves (at Gunnersbury Park)

### MEN'S FIRST TEAM

DATE	TIME	COMP	OPPONENTS/VENUE
Dec 16	3pm	ECL	(H) Brimsdown (at Old Spotted Dog Ground)
Dec 23	3pm	ECL	(A) Hoddesdon Town (at Lowfield)
Dec 30	3pm	ECL	(A) Enfield Borough (at Maurice Rebak Stadium)
Jan 06	3pm	ECL	(H) Barkingside at (Old Spotted Dog Ground)
Jan 13	3pm	ECL	(A) St Margaretsbury (at St Margaretsbury Rec Ground)

PROGRAMME PRINTED BY **RW HART LTD**  
742 FOREST ROAD, E17 3HR. TEL 020 8520 3151