

Clapton CFC vs C.B. Hounslow United Reserves
14:30 26.10.2019, Wadham Lodge Stadium – MCFL Prem.
Clapton CFC vs Crystal Palace WFC Development
14:00 27.10.2019, The Stray Dog – GLWFL Div 1
Clapton CFC vs NW London FC
19:45 5.11.2019, Wadham Lodge Stadium – MCFL Prem.



The series aims to change perceptions of what it means to be an Essex girl. Celebrating them in unexpected places such as billboards, schools and this programme cover.

Portrait of an Essex Girl
Annabel Staff, Clapton CFC Member
Part of a series of portraits of women and non-binary people from Essex
by Edith Whitehead, 2019



GEOFF OCRAN

MEN'S TEAM PLAYER-MANAGER



TWO WINS ON THE BOUNCE AND CONFIDENCE IN THE CAMP IS HIGH.

We expected a great attendance on Lon League Day and we were definitely not disappointed. Thanks again to the 909 who braved the weather to come down and see us take on Stonewall.

With such a momentous day predicted, we knew we had to do our part on the pitch. Despite going 2 down, the belief within the squad was the best it's been all season and that only happens when you have leadership and experience to call upon.

We rotated the squad vs Runwell to give a few other players a chance to stake a claim for the first team and it was a very professional

performance away from home.

We have been rewarded with a home tie against Leigh Town in the next round so again it will be another opportunity to potentially give a run out to few who are knocking on the door.

Two home league games now, vs CB Hounslow Reserves and our friends NW London.

As we are unbeaten at home I think we need to continue that run considering how many away games we have had already.

The league is still relatively tight so if we can put a run together, then we should comfortably climb into the top half and close the gap on the top teams.



PATRICK MCLAUGHLIN
WOMEN'S TEAM HEAD COACH

ANOTHER WEEKEND, ANOTHER HOME GAME – a huge thank you to everyone for their constant support.

Although we have benefited from three home cup ties, this will be our fourth home league game out of five, leaving a backlog of away games to make up later in the season.

I've previously mentioned the size and quality of our squad and we have recently seen how important that is. Despite numerous absences and injuries, we were able to put out a strong side against Leyton Orient Development.

Unfortunately, this wasn't enough for the result to go in our favour against a team top of the league above. We matched up with them well for long spells in the game, but quality around both boxes on their part gave them a comfortable victory in the end.

As disappointing as it is to lose, it highlights where we need to improve, and we can take positives from how we played.

Today's game sees us take on Crystal Palace Development, who have made a bright start to the season.

This isn't exactly a surprise, given they secured promotion from Division 2 South by winning all 18 of their games.

We can therefore expect a difficult game once again, although their invincible run was abruptly halted when they lost 5-2 to Walton Casuals a couple of weeks ago.

Given the tightness of our own game against Walton, if we are at our best today, we should be confident of achieving a result.

Next week we finally have our second away trip and it's a long one, all the way to Hampton and Richmond Borough.

Hopefully we haven't become too accustomed to playing at home and we can take the game to a team who've had mixed results so far this season. Enjoy the game!



ONLINE STORE REOPENS FOR LIMITED RUN

We're holding two online flash sales on our website of 250 away shirts each time at the usual price of £30 inc VAT. If the shirts are well received - and our volunteers can cope - we may carry on. Members were first to find out about the first batch going on sale before we mentioned it on social media. If you want to find out when the shirts go on sale, sign up to become a member.

BUCKET SHAKE FOR AKWAABA

On Non-League Day our bucket shake raised £492.50 for Akwaaba. The club topped this up to £600. Akwaaba is a Hackney-based social centre for migrants that runs every Sunday afternoon.

They tweeted afterwards: "Thank you @ClaptonCFC for having us today!"

"We had a great time watching the game with @magpieprojectuk,

making t-shirts and fundraising. On the way home the kids were asking, when can we come back?"

"Huge thanks to @ClaptonCFC and all the fans who donated!"

PHILANTHROPIC FLAGGER

The assistant referee at the men's team's BBC Essex Premier Cup tie with Runwell Sports has generously forfeited his £28 fee, suggesting it be donated to charity. The 80-year-old wanted the money to be used to help fellow pensioners so our Outreach Committee will decide on an appropriate cause. As Geoff Ocran and Jack Francis took turns running the opposite line, we're able to add that fee as well, which will take the total donation to £56.



BUCKET SHAKE FOR MAN DEN

We raised £75.34 for Man Den, who provide mentoring and activities for young people, in a bucket shake at the Walton Casuals game. The club has agreed to match this from donations at the gate making it £150.

Afterwards, Man Den tweeted: "This is amazing! Thank you so much to everyone who donated we are honestly so grateful! This covers us for almost 2 sessions!"

NO TOLERANCE OF INTOLERANCE

Quadrato Meticcio, a fan-owned club in Padova, has been accused of "discrimination" and "not being welcoming" by newspapers, right-wing MPs and even the president of the Italian National Olympic Committee. Why? They refused to register a player who had made racist comments online.

Clubs founded on principles of inclusivity cannot extend tolerance to those whose beliefs are fundamentally intolerant. We wish the Italian authorities would direct their energies towards actually tackling racism in sport. CCFC members and fans expressed their solidarity with a banner at the Walton Casuals game.



THE FUTURE OF THE OLD SPOTTED DOG GROUND

DOZENS OF PEOPLE MET ON OCTOBER 15TH TO discuss how to make the Old Spotted Dog Ground the hub of the Newham community.

The dilapidated ground, next door to the derelict pub of the same name on Upton Lane, Forest Gate, was recently repossessed by its owner, Star Pubs & Bars, after the previous leaseholder failed to pay the rent.

Star Pubs & Bars has offered a new lease to Clapton Community Football Club, our not-for-profit members-owned and -run club, after a thorough assessment of all bids.

While those negotiations are still going ahead, a first public meeting was held at nearby Durning Hall

to gather suggestions of what community uses the ground could accommodate.

STATE OF THE OLD SPOTTED DOG

Our surveyor, who made a site visit on October 3rd, introduced his report to the meeting.

He described the state of the ground as "appalling" and full of health and safety risks.

He failed the ground on nearly all points for the FA ground's grading G, for Step 6 football, one level above our position, but below the level it has recently been used.

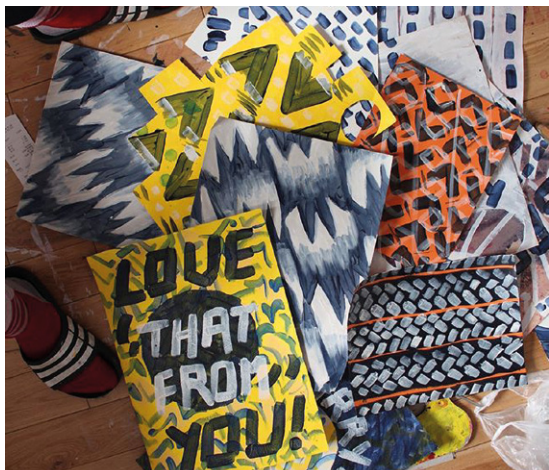
Many major problems with the OSD were highlighted - from roof leaks dripping on to electrical junction boxes



WITH YOU ALICE MAY WILLIAMS

CLAPTON CFC PLAYER ALICE MAY WILLIAMS is currently showing her work at the Science Gallery as part of the *On Edge – Living in an Age of Anxiety* exhibition.

She also designed our recent programme cover. If you are interested in Alice's work you can check at [instagram.com/a_may_williams](https://www.instagram.com/a_may_williams).



Here she tells us about her inspiration and the joy of taking up football again...

Most of my projects are grounded in a strong interest of mine, and involve some level of research, often historical.

Since I graduated from my MFA at Goldsmiths in 2014 I have worked mostly using video to tell stories, as I love words, and writing pieces which weave my various interests together.

In 2015 I made a project called *'An Unreliable Witness'* about my great great grandmother who lived all over Battersea.

It was sparked by an audio recording I was given of her talking in 1959, when she was in her 90s.

She was born in 1865, and it's amazing to hear her talk on tape, as London accents like hers just don't exist anymore.

Her family were riverboat people, and she tells a story about how her father used to run the ship aground in the Thames and wait there until people had spent enough money in the bar to make ends meet.

She was alive to see both Tower Bridge and Battersea Power Station being built!

In 2016, using a production award I won from Jerwood, I made a film called *Dream City*.

It was about the history of the site of Battersea Power Station, from being a marshland, a farm, the site of a proposed theme park, power station and eventually the site of various failed/failing development plans, including current one.

I was interested in how the rhythms of development in the city are cyclical, and the massive plans for the area currently may come to nothing, or be demolished.

Many of the houses my own Nan and her mother, and her mother lived in in Battersea now longer exist.

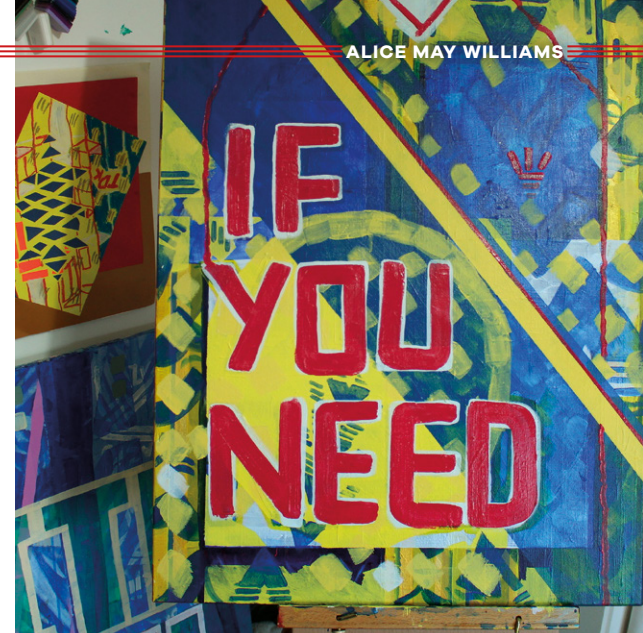
I have also been on residency in a Tudor house in Liverpool and last year made a film about the history of biological sex for the National Trust, called *'By The Accident of Your Birth'*.

When I was approached to be a part of the *On Edge* show, I was very sure that I wanted to make something very positive.

I was not interested in making an anxious artwork that illustrated the problem, but something that represented a moment of release, or escape, a route through anxiety.

For me, this escape came from football, which I took up in 2017 having not played since school.

I have been on medication for depression and anxiety for many years, which has been hugely beneficial, but it was not until I started playing regularly on a team that I felt I had a real purpose in life, a sense of being useful, and life being truly worthwhile.



I wanted to express this through painting, which I had put aside in favour of video. I wanted to see how, like when running around on a football pitch, I could say everything that needed to be said in as few words as possible.

Starting with the colours and patterns of vintage kits, I began to build up layers of acrylic paint.

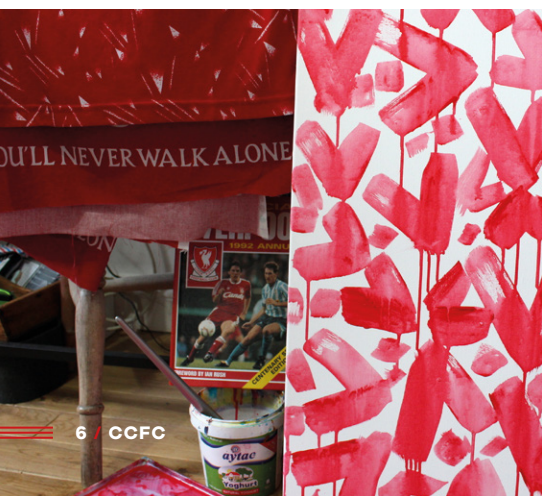
On top of these I painted the most popular phrases that teammates use on the pitch, or coaches shout to encourage players to communicate.

I thought not only were they beautiful, but they could be used as mantras in life too, a positive affirmation to carry off the pitch and into everyday life.

I like that fellow players will get the meaning behind the words, but hopefully all viewers will take away at least the feeling of joy and support of being part of a team.

I have been injured, keeping me away from the pitch, but painting these has been a huge pleasure for me, I am so proud of the show, my team, and cannot wait to get back on the pitch!

ON EDGE: Living in an Age of Anxiety is on at Science Gallery London until 19 January 2020.



YOUNG TON IHSAN UDDIN RUNNER-UP IN THIS YEAR'S GUARDIAN YOUNG SPORTSWRITER OF THE YEAR COMPETITION IN THE 7-9 YEAR OLD CATEGORY

The judges were so impressed with Ihsan's article - a match report of Clapton CFC's title-winning game against FC Roast.

All of them said what a tough decision it was to choose between them. Per Mertesacker said: "The standard was so impressive."

Ihsan brilliantly conveyed the atmosphere of the match in his article and his descriptions kept the judges gripped all the way to the end.

Here is his award-winning article... we think you'll agree it's some brilliant writing.

Ihsan Uddin (left) playing for the Young Tons, below Clapton CFC's title-winning game against FC Roast in front of the record crowd



CLAPTON CFC GIVES FC ROAST A GOOD ROASTING!

CLAPTON CFC PLAYED IN FRONT OF A RECORD crowd to win the Middlesex counties First division (East and Central) league by an amazing one point!

The Stray Dog, the temporary home of the club has never seen such a gigantic crowd. The sound of drums pulsed around the stadium and the atmosphere was one of high expectations from the very beginning.

It wasn't going to be easy, last time they met FC Roast they drew 4-4. But that was on a cold miserable day in October, and this was the last day of the season and the stadium was filled with warm, hopeful sunshine. Clapton had to win this match to win the League.

The first goal was inside 20 minutes it was a belter - Adejokun caught it from a simple rebound and the keeper had no chance of saving it, the crowd went wild.

Unusual for most football matches, Nielsen was a little while after tackled to the ground by a French bulldog (which we later found out was called Pie).

After the incident a second lovely goal was scored by Adejokun, who sliced through the Roast defence. The crowd went crazy knowing the title was in their grasp and they were so close to winning.

The second half was tougher for the Tons as Roast played much harder, but goalkeeper Dan Anfossy made exquisite saves, one of them was an outstanding punch.

Yacine Rabia also did some excellent defending, keeping the Roast strikers outside of the goal area. The atmosphere was amazing, people were cheering and the sound was deafening and then something really special happened for the Tons, Adejokun

blasted another one in and got his hat-trick in the 72nd minute.

The end was near, Clapton needed to stay cool and defend, which they did, and they got their glory. Clapton now move up into the Middlesex Counties Premier League!

After the match Adejokun was very humble, he was made man of the match and went on to say, "The chemistry of the team was great". "We tried our hardest and I think we deserved to win the league".

Dan Anfossy kept a clean sheet despite Roast's second half attacking and after the match he said, "I was really nervous, I haven't ever played in front of such a big crowd". Those nerves obviously disappeared as their goal line increased.

After the victory, the players were surrounded by thick, red smoke and they sprayed cans of Polish beer.

Each player was hoisted up on the shoulders of their team-mates as they celebrated in front of their adoring fans, some of whom came onto the pitch with them.

The crowd sang some of their victory songs along with their staff who all celebrated like they had won the Premier League! The party lasted a long time afterwards.

Next season, they will play in the higher tier and they are moving over to the Wadham Lodge's main stadium leaving behind The Stray Dog pitch they've played on this season, but after today it feels like they definitely have found a new home.

By Ihsan Uddin



when Kacper Strzala volleyed home a corner. Although they had many other chances in this half, the second did not come until just before the break. Idries Turay tapped home an inviting cross.

Clapton nearly got on the scoresheet when Bruno Pereira prodded a Nielsen freekick goalwards from eight yards. There was no power on it, but the unsighted keeper only just got down in time to prevent it creeping into the corner.

Player-manager Geoff Ocran brought on Josh Adejokun and Prince Kwakye for the second half. For the first few minutes it looked like it might shift the balance of the tie.

Clapton played with a higher tempo and forced a couple of chances. Stefan Kilron put in a nice cross for Josh, who headed just over.

That sign of promise made the next goal even more devastating. The electric Mahmoud ran down the right and rocketed it into the far corner. Game well and truly over.

Substitute Charlie Fagan did have one headed chance from a Liam Smyth corner. But the Tons were mostly just hanging on for dear life.

Jess Yanga and Glody Kiyombo added late strikes to seal a miserable afternoon for the Tons men's team, who were consigned to their third defeat in the five league games to date.

Ocran was frustrated that his players were not able to execute his game plan: "I just thought they were the better team.

"All over the pitch they were sharper and quicker than us. They had the intensity, hunger and fight."



MATCH REPORT: 05/10/2019 CRICKLEWOOD WANDERERS 5 CLAPTON CFC 0

MIDDLESEX COUNTY FOOTBALL LEAGUE, PREMIER DIVISION

CLAPTON COMMUNITY MEN'S DIFFICULT start to life in the Middlesex County League Premier continued as they were demolished at Cricklewood Wanderers.

The Wembley-based side - who actually finished bottom of the division last season - were full of pace and trickery, which the Tons just could not contain.

Aaron Yfeko and Noah Adejokun, the subs who had perked up Clapton's performance against Indian Gymkhana the previous week, played from the start.

Clapton had the first chance in the opening minutes. Bilal Hussain brought down a Stefan Nielsen cross and stabbed it towards the top corner. But the home goalkeeper sprung to palm over the bar. After that, it was all downhill for the East Londoners

The first Cricklewood goal came in just 11 minutes,



MATCH REPORT: 06/10/2019 CLAPTON CFC 1 WALTON CASUALS LADIES 2

GREATER LONDON WOMEN'S FOOTBALL LEAGUE DIVISION ONE

THE OLD SAYING GOES THAT ALL GOOD things must come to an end, and that includes Clapton CFC's unbeaten start to the league season. But despite defeat to a polished Walton Casuals side, the Tons can take a lot of positives.

The visitors almost took the lead from the get go as a deflected through ball fell kindly to a Walton winger, but fortunately, her shot hit the bar and tipped over for a goal kick.

Some solid defending from Alice Nutman and Phoebe Parthews ensured that Walton continued to be frustrated.

Walton enjoyed the lion's share of the chances, but they came up against a formidable Polly Adams. The keeper pulled off a tremendous save from a shot that looked destined to ripple the net.

Shot after shot found their way into the keeper's safe hands, and when she couldn't hold on to the ball, she made sure it went anywhere else but in the net.

In truth, the Tons were lucky to see the half out on level terms. But whatever coach Patrick McLaughlin said at the break must have sunk in quickly.

Just five minutes after the restart, striker Naomi Scriven raced down the right wing and turned

Walton's poor left-back inside out before cutting a low ball across the face of goal where it was met by the onrushing Saskia Walker to hammer home.

Now tails were up and we had a game on. Both sides taking turns to run at each other through the midfield. This game had more goals in it and everybody knew.

A collision between Adams and a Walton forward left the goalkeeper on the floor clutching her shoulder. Luckily she was able to continue, but Walton were pushing hard.

The visitors got their breakthrough on 70 minutes, as a free kick from just outside the box hit the bar, with the rebound finding a Walton forward who looped it over Adams.

Clapton heads didn't drop, but the visitors gave themselves a lead as a long range effort found its way over Adam's outstretched arm.

With 15 minutes remaining, Clapton gave everything in search of an equaliser, but to no avail.

However, with so many positive aspects in a dogged performance, there is no doubt the team will bounce back.



MATCH REPORT: 12/10/2019

CLAPTON CFC 5

STONEWALL FC 2

MIDDLESEX COUNTY FOOTBALL
LEAGUE, PREMIER DIVISION

On 17, Stonewall captain Jehneil Lemonious squeezed it through to Nakhli. Clapton defender Dean Bouho, moonlighting as (the most biased) linesman (in the history of football) put his flag up. Nakhli stuck the ball past Jack Francis. Deano continued to flag frantically. The ref ignored him. Nakhli did a Cristiano Ronaldo-style goal celebration. Sorry Nasar, but we don't want to see that kind of thing.

The visitors' next goal was a thing of beauty. From a ball from the right, Lemonious scissor-kicked low past a rooted Francis.

Tons midfielder Prince Kwakye then snatched at a fumbled ball in the Stonewall box to pull one back.

Shortly afterwards, Paul Oshin burst in from right. He squared all the way to back post where Owiredu's complete mishit luckily tricked the Stonewall goalie and dropped just inside the post. A freak goal. A freaquiliser.

A whole game's worth of drama packed into an epic first half.

The Clapton defence seemed to get to grips with the Stonewall threat in the second period. When called upon, Francis wasn't letting anything else past. That gave CCFC the platform from which to snaffle some more goals.

On 65 minutes Owiredu danced around the goalkeeper and slid it across the boggy six-yard box. It just evaded the desperately retreating defender to nestle in the bottom corner. 3-2. Clapton in the lead for the first time.

They extended their advantage when Stonewall were penalised for roughhousing Eliot Crosbie in the box.

Owiredu stepped up and fired the spotkick home for his hat-trick.

Ten minutes from the end, a ball from the right snuck through to Crosbie. He toed it away from a defender right into top bins to put another layer of gloss on an impressive victory.

IN FRONT OF A RAUCOUS NON-LEAGUE DAY crowd of 909, the men's team roared back from 2-0 down to take full points against Stonewall.

It quickly took shape as an open, end-to-end game, with lots of big slide tackles flying across the rain-soaked Wadham Lodge pitch.

Clapton forward Lewis Owiredu had a couple of early chances in the box. The first was smothered by Stonewall keeper Dennis Aware. The second was popped over the bar.

On 12 minutes, Stonewall's Nasar Nakhli jinked in from the left, beating one, then two. He tried to flick in from an acute angle, but Jordan Odofin lunged to turn behind.

MATCH REPORT: 13/10/2019

CLAPTON CFC 5

COMETS FC 2

GREATER LONDON WOMEN'S FOOTBALL
LEAGUE DIVISION ONE

FANS OF SYMMETRY WILL BE VERY SATISFIED
with Clapton women's 5-2 home win over Comets, a day after the men saw off Stonewall by the same scoreline,

A brilliant individual goal put Clapton 1-0 ahead.

Ciara Monahan fed Naomi Scriven on the right, who duly left her defender for dust, cut inside and icily finished into the far bottom corner.

Clapton continued to orbit the Comets' penalty area and after another Scriven-led attack, the winger was both pushed and tripped in the box within the same movement.

The referee, who was behind the play, initially signalled "no penalty", but was corrected by a furious assistant ref.

Captain Monahan smashed the pen right down the middle, the force taking it through the impacted goalie.

The second half started with the Tons still on the attack. Laura Wright hit a long range shot, which crept into the bottom right hand corner for her second goal in a Clapton shirt.

Zhane Amoaten swiftly emulated Wright with her own long-ranger – a 20 yard hit and Clapton appeared to be out of sight at 4-0.

Perhaps unfortunate to be four goals down, the away side soon pulled a goal back. Good work along the right and a tidy ball inside brought about the visitors first firm attack of the second half.

Riding a robust challenge from the Clapton defender, another potential penalty call ducked by the referee,



the ball spilled favourably for the Comets forward. Tons keeper Sophia Axelsson couldn't stop the ball smashed at her from close range.

And she could do little to stop Comets' second either – a wonderful hit from 25 yards, which travelled on a clear trajectory, right into the top right hand corner.

Chasing down every ball, the light blues sensed Clapton were rocking slightly. The Tons were soon forced to clear the ball off the line again, after another effort from outside the box required a fine initial save from Axelsson.

Eventually Clapton regained a foothold and started to exploit the space left by their attack-attack-attack-minded opponents.

Another Monahan set-piece forced a goalmouth scramble which the ever sharp, Scriven exploited to tap in at close range.

Clapton saw out the last phase of the match in relative comfort with their three goal advantage restored.



MATCH REPORT: 19/10/2019

RUNWELL SPORTS 1 CLAPTON CFC 2

MIDDLESEX COUNTY FOOTBALL LEAGUE, PREMIER DIVISION

THE MEN'S TEAM TRAVELLED OUT EAST TO record a more-comfortable-than-it-sounds 2-1 win over Runwell Sports in the second round of the BBC Essex Premier Cup.

The hosts, in their stereotypically Essexian shitty yellow kits, struggled to deal with Clapton's opening onslaught. Lots of big hacks and shirt pulls gave Clapton's left back Justin Cummins plenty of chances to whip into the box.

On nine minutes, one such ball made it all the way through to Yacine Rabia, who couldn't angle it back towards the goal.

Then from a corner Runwell couldn't clear, the ball fell to Dean Bouho. He drove it towards the goal. Right in front of the goalkeeper, Josh Adejokun did a fancy flick to take it in.

Runwell were still getting to grips with Clapton by literally getting to grips Clapton players' shirts. The referee was lenient. So much for BBC impartiality.

On 25, more commotion in the home box. Another Cummins corner ping-ponged, then dropped to Fama Sangare, who slotted into the corner for 2-0.

With the two goal cushion, the Tons seemed to relax in the second half. A little too much.

Early on the Runwell's Clarke put it into the side netting from a tight angle.

On 72 minutes, another corner Runwell failed to get off the ground still managed to cause chaos. This one whistled straight across the goal line and out the other side.

Bouho was next to threaten from a corner up the other end. He hustled through the crowd and blasted straight at the keeper. He had a second stab at the rebound but shot into the side netting.

Sub Bilal Hussain then led a counter attack, playing through Adejokun. A Runwell defender tripped himself and fell over a good 10 yards from the action. Adejokun went for the nutmeg, but the keeper thigh-trapped it.

Then, suddenly, Runwell got one back. Joe Olley jogged into the Clapton box, evading some not-too-convincing challenges. He then slid home off the base off the post.

With the Essex Olympian League Division One side pushing for a late equaliser, gaps appeared at the other end. Hussain had one good chance, but a bobble just as he swung his boot sent the shot over the bar.

Clapton held on to book a home tie against Leigh Town in the next round.



MATCH REPORT: 20/10/2019

CLAPTON CFC 0 LEYTON ORIENT DEVELOPMENT 5

CAPITAL WOMEN'S CUP

THIS CAPITAL WOMEN'S CUP TIE WAS VERY much a free hit and although Clapton CFC were comprehensively outscored we were by no means outfought or outclassed.

Our illustrious Waltham Forest neighbours are top of the league above ours and played with the confidence and assuredness throughout you'd expect from such a lofty position.

After a delayed kick-off due to the late arrival of the officials, the Tons' task was almost immediately made even harder with a soft goal conceded inside two minutes. A muddle in the penalty area left Orient's Georgia Raby free to slot it in from close range.

It was end to end, with Orient dragging a shot from the right side agonisingly wide of the far post, while at the other end a cross whipped in by Scriven just evaded several onrushing Tons in the box.

However, two lovely goals from Daphne du Leener – shots from outside the box, superbly placed high into the net giving Sophia Axelsson little to no chance – pretty much settled the contest within the next ten minutes.

Half-time arrived, and although we trailed 3-0, the shots on goal stats told a different story.

This had been a much more even contest, with the Tons defence particularly impressive, led by the unflappable Phoebe Parthews and supported by no-nonsense Alice Nutman, ever-dependable Hannah Wright and impressive debutant Alice May Williams.

They were limiting the O's to mainly long shots from outside the box – unfortunately they were proving particularly good at hitting those long shots. As a fourth goal curled into the top corner around the 60-minute mark from Valeria Moreno proved.

The O's fifth was the best team goal of the lot, with a classy close passing move down the left wing finally being worked into the box, and a lurking Ella Meadowcroft tucking it home from close range.

The game understandably petered out as a contest, and in truth the Tons never really threatened to score in the second half, but no one could fault the work-rate and commitment right to the end.





CRYSTAL PALACE DEVELOPMENT

Greater London Women's Football League, October 27th

WHEN THIS IS WRITTEN, CLAPTON CFC's opposition this Sunday at the Stray Dog sits comfortably in second place in the Greater London Women's Football League Division 1.

The Eagles women's team were founded in 1992, and their first team play in the FA Women's Championship, with their home games being played at Hayes Lane in Bromley.

CCFC's opponents, Crystal Palace Development, also play their home games in Bromley, but 2 miles further south at The Warren.

Last season, the Eagles' development squad won the Greater London



using their site at their newly-built ground, Green Lane.

Their first team joined the Middlesex County Football League in 1994 and progressed through the divisions and beyond to reach the Combined Counties League Premier, Step Five on the football pyramid.

Meanwhile their reserve team has been in MCFL for 20 years too and in the Premier Division since 2014.

Typically finishing mid-table, last season CB Reserves had a good showing finishing in fourth place.

Having lost several of their players - the usual case for a reserve side - this season has been a difficult start. The club currently sit in the relegation zone alongside Kensington (also known as The Dragons) with one so far came against PFC Victoria in early September.

And the CB? That stands for Cater Bank, a company owned by their former chairman's dad. It's stuck ever since.



CB HOUNSLOW UNITED RESERVES

Middlesex County Football League Premier Division, October 26th

THE TONS PLAY ONLY THEIR SECOND Saturday home league game of the season against a struggling CB Hounslow United Reserves.

The club, known as The Dragons, have 32 teams starting at Under 6 level right through to their first team who play in the Combined Counties Football League Division 1.

They also reach out to the wider community with netball, basketball, archery, cycling and running clubs all

Women's Football League Division 2 South. They won all of their 18 league games, and finished with a whopping goal difference of 81, meaning an average of 4.5 goals scored per game.

This season, having played five games in the league, they have so far only seen one defeat - a 5-2 loss away against Walton Casuals.

With the Ton's recent cup defeat fresh in mind, we can be assured that they once again will want to get back to their winning ways.



HAMPTON & RICHMOND BOROUGH

Greater London Women's Football League, November 3rd

THE TON'S SECOND AWAY GAME OF this season will constitute a long journey to Tudor Park in Feltham (just under 30 miles from the Stray Dog), where they take on Hampton & Richmond Borough Ladies FC.

The Beavers' first team was founded in 2006, and in 2016 they added a development side, currently playing in Division 3 South. Both teams are affiliated with their male equivalents.



Last season, Hampton finished third in Greater London Women's Football League Division 1, just behind promoted sides Sutton United Ladies and Clapham United WFC.

Hampton had a shaky start to their 19/20 league campaign, with three defeats in as many games, being topped by Walton Casuals, Comets, and Crystal Palace Development. Having later found their rhythm, they saw a home win against Regents Park Rangers, and an away win against Luton.

With Hampton currently sitting in 6th place in the league, one point behind the Tons, this game is sure to be a well-matched affair.



NORTH WEST LONDON FC

Middlesex County Football League Premier Division, November 5

HERE WE GO AGAIN. THE MEN'S TEAM will be taking on fellow promotees

NW London for the fifth time. And the visitors to the Wadham Lodge Stadium for this evening game have a slight historical edge.

The first game was a pre-season win for the Tons at the New River Stadium last summer. Then the Gorillas, as they are known won the first league game 2-1. The return fixture, last season's only game played under the lights in the main stadium was a dramatic 4-4 draw. Then this pre-season, NW recorded a thumping 6-2 win over an experimental Tons side at the Stray Dog. Winger Bilal Hussain bagged both of the consolation goals.

But the Clapton side will look very different from that day. One interesting development is that former North West players Bruno Pereira and Marinho could be facing their old teammates in the red and white of Clapton.

While Geoff Ocran's side have toiled against some of their new Premier League opponents, NW are holding their own, keeping that other familiar outfit London Samurai company up near the top of the division. They recovered from a heavy opening day loss to Hillingdon and posted a couple of draws in August.

As with CCFC, there was disappointment in their FA Vase debut, falling at the first step with a defeat to Harefield United. Since then they have beaten Cricklewood Wanderers 5-0, Sporting Hackney 6-4 and Larkspur Rovers 3-2. Impressive form.

The man with the smoking hot scoring boots has been French striker Hassane

Gassama, who got four against Hackney alone.

But the squad still a strong South American core, with half a dozen odd Brazilians in the squad. This connection is also reflected in the club's support for Project Favela (@ProjectFavela on Twitter) a Rio-based NGO.



PFC VICTORIA

Middlesex County Football League Premier Division, November 9

IN THIS LEAGUE YOU GET AROUND the world without ever leaving the M25. Having already been to Somalia heritage club (Hilltop FC) and India Gymkhana this season, the Tons now face a Polish community team in West London.

Founded in 2016, PFC Victoria started in the Division 2 of the Middlesex County League system and gained back-to-back promotions to the Premier Division.

Last season the club came close to gaining a triple promotion, but ended second to St Panteleimon. They also won the Middlesex Intermediate Cup and were invited to Warsaw for a friendly against two-time Polish champions Polonia Warsaw.



Things haven't always been smooth sailing for the team. In a 2018 article their defender Bartosz Andryszak said that the team often get stick from opposing fans on the touchline. Largely about the origins of the players. "What do we do about this?" Says Andryszak. "We make them eat their words with our results."

PFC have also joined the list on non-league clubs with imaginative shirt designs. Their third kit last season featured an image of the notoriously skilled Polish fighter pilots who came to the UK and supported the fight against fascism. Many of them stayed in the country after the war and became one of the foundations of the Polish community in the UK today.

The club would like to continue to tap into this heritage and give Poles in the

capital a hub to gather round. Coach Emil Kot has said: "Instead of going to Arsenal, Chelsea or Tottenham, I'd like to one day see families come over to Victoria and cheer on their compatriots."

The club has been able to attract players who have experience at the top level of Polish football and also in the German Bundesliga. So there is no shortage of ex-pat talent for the team to choose from.

This season has been a mixed bag so far, however, due to a slow start.. However in recent weeks that have beaten Cricklewood and Indian Gymkhana, both clubs that have dished out defeats to the Tons this season.

Hopefully our first ever meeting will be the start of a great friendship.

RESULTS/FIXTURES

MEN'S

DATE	COMP	VENUE / OPPONENTS	RESULT	SCORERS	ATT.
06/07/19	Friendly	Wadham Lodge 3G (H) vs Wanderers FC	W 3-2	Wise, Ocran, Kilron	30
13/07/19	Friendly	Mabley Green (A) vs Lopes Tavares	L 1-4	Nott	75
20/07/19	Friendly	The Stray Dog (H) vs Sporting Hackney	L 1-2	Panescu (Pen)	150
25/07/19	Friendly	Wadham Lodge Stadium (A) vs Walthamstow FC	L 1-2	Nielsen	120
27/07/19	Friendly	Menace Arena (A) vs Peckham Town	W 4-3	Wise, Hussain (2), J Adejokun	97
03/08/19	Friendly	The Stray Dog (H) vs NW London FC	L 2-6	Hussain (2)	207
10/08/19	Friendly	Sportpark Dölitz (A) vs Roter Stern Leipzig	W 2-2 (3-0 pns)	Odofin, Crosbie	650
20/08/19	MCFLPD	Wadham Lodge Stadium (H) vs Sporting Hackney	W 2-0	N Adejokun, Crosbie	404
24/08/19	MCFLPD	Hanwell Town FC (A) vs Pitshanger Dynamo	L 0-2	143	
31/08/19	FAV	Blackstone Stadium (A) vs Wivenhoe Town	L 1-5	Loback	133
07/09/19	ASPD	Brunel University Sports Complex (A) vs Hillingdon FC	W 3-0	J Adejokun 2, Nielsen	82
14/09/19	Friendly	Wadham Lodge Stadium (H) vs Eastfield FC	W 3-0	Trialist, Panescu, Owiredo	102
21/09/19	MCFLPD	Rectory Park (A) vs Hilltop FC	D 2-2	N Adejokun, Kwakye	77
28/09/19	MCFLPD	Indian Gymkhana (A) vs Indian Gymkhana	L 4-5	N Adejokun 2, Marinho, Yfeko	80
05/10/19	MCFLPD	Wembley FC (A) vs Cricklewood Wanderers	L 0-5	109	
12/10/19	MCFLPD	Wadham Lodge Stadium (H) vs Stonewall FC	W 5-2	Owiredo 3, Kwakye, Crosbie	909
19/10/19	BBCEPC	Runwell Sports Club (A) vs Runwell Sports	W 2-1	J Adejokun, Sangare	167
26/10/19	MCFLPD	Wadham Lodge Stadium (H) vs CB Hounslow Res			
05/11/19	MCFLPD	Wadham Lodge Stadium (H) vs NW London			
09/11/19	MCFLPD	Hanworth Villa (A) vs PFC Victoria			
16/11/19	MCFLPD	Wadham Lodge Stadium (H) vs Brentham FC			
23/11/19	MCFLPD	Lord Halsbury Fields (A) vs Larkspur Rovers			
30/11/19	MCFLPD	Northwood FC (A) vs London Samurai			
07/12/19	ASPD	Wadham Lodge Stadium (H) vs Stonewall			
14/12/19	MCFLPD	Wadham Lodge Stadium (H) vs Indian Gymkhana			
21/12/19	MCFLPD	Wadham Lodge Stadium (H) vs Kensington Dragons			

MCFLPD = Middlesex County Football League Premier Division FAV = FA Vase BBCEPC = BBC Essex Premier Cup ASPD = Alec Smith Premier Division Cup

WOMEN'S

DATE	COMP	VENUE / OPPONENTS	RESULT	SCORERS	ATT.
03/8/19	Friendly	The Stray Dog (H) vs Santacruzense	W 5-2	Link (4), Riddick	207
18/8/19	Friendly	The Stray Dog (H) vs Tower Hamlets	W 9-0	Link (4), Walker (3), Monahan, Quartey	109
01/09/19	FAC	The Stray Dog (H) vs Margate	W 6-3	Link (2), A Holmes, L Wright, Monahan, Philips	310
08/09/19	GLWFL	The Stray Dog (H) vs Luton Town Development	W 4-0	Scriven 2, A Holmes	140
15/09/19	GLWFL	Barn Elms (A) vs Regents Park Rangers	D 1-1	Amoaten	60
22/09/19	FAC	The Stray Dog (H) vs Oakwood Ladies	L 2-3	A Holmes, Riom	261
06/10/19	GLWFL	The Stray Dog (H) vs Walton Casuals	L 1-2	Walker	103
13/10/19	GLWFL	The Stray Dog (H) vs Comets	W 5-2	Scriven 2, Monahan, L Wright, Amoaten	71
20/10/19	CWC	The Stray Dog (H) vs Leyton Orient Development	L 0-5		126
27/10/19	GLWFL	The Stray Dog (H) vs Crystal Palace Development			
03/11/19	GLWFL	Tudor Park (A) vs Hampton & Richmond Borough			

GLWFL = Greater London Women's Football League Division 1 FAC = Women's FA Cup CWC = Capital Women's Cup

CLAPTON HISTORY BY GARY PRICE

CALLING THE SHOTS

CLAPTON vs ALDERSHOT TOWN 1993

IN JANUARY 1991 THE FA AGREED TO DEBT ridden Aldershot switching the FA Cup 3rd round tie from their Recreation Ground to opponents West Ham's Boleyn Ground for safety reasons and to boost the 4th division club's finances.

A goalless draw ensured another welcome payday, the replay also at the Boleyn resulting in a 6-1 West Ham win.

The ties attracted more than 43,000 fans, Aldershot's share of the gates helping them survive another 14 months.

On the 25/3/1992 Aldershot folded, failing to complete their final 10 league fixtures, thus ending 60 years of Football League membership.

Five months later Aldershot with new owners and under their original name would return to Newham

to play in vastly different circumstances.

Loyal supporters were determined to keep the club alive and a new company was quickly formed. Town was added to the name, thus reverting to the original name of the club formed in 1926.

Town was dropped upon entry to the Football League Division 3 South in 1932. The new Town applied to join the Isthmian League and were accepted to compete in the third division for the 1992/93 season.

Town's opening fixture on 22/8/1992 at The Recreation Ground was against Clapton, one of the six original Isthmian League members, who were commencing their eighth consecutive season in the 'basement' division.

A crowd of 1620, incidentally the Shots lowest home gate of the season, saw the Tons take a two

goal lead within 20 minutes before succumbing 2-4.

For the Shots it was the start of an unbeaten league run that would last into the new year with 18 wins from 21 games.

For the Tons it was the start of a run that would see them mired in the all too familiar bottom three position, with four wins from 19 games.

At the time of the return fixture at The Dog, Aldershot were eight points clear at the top, with the Tons third bottom but eight points clear of last place Bracknell Town with a game in hand.

Clapton's largest league crowd in decades, 545, witnessed the season's biggest surprise as the visitors defeated Town 2-1, both goals coming from Gus Gulfer.

As so often in their post war history Clapton flattered to deceive, as two weeks after beating Town, they lost 0-6 at The Dog to Flackwell Heath, watched by 42 fans.

Town marched on to the title, with an 18 point margin over Thame United, while losing one more game, at 4th place Leighton Town.

They also recorded the largest gate at each of their 19 away games, while averaging 2090 at the Rec.

The Tons picked up three more wins finishing 12 points clear of last place Feltham. The Aldershot game boosted the average gate at The Dog to 74.

Defeating Aldershot proved that the Tons could raise their game against the better teams, top five Thame United and Cove were also beaten at The Dog.

Conversely Clapton won only one fixture against the bottom three clubs, Feltham and Camberley recording rare doubles.

Aldershot spent a further nine seasons in The Isthmian League, achieving promotion to the Conference in 2003.

Five years later they were in the Football League, where they stayed for five years before relegation back to the Conference where they have remained.

Clapton remained in the Isthmian League until 2006 when after three consecutive bottom place finishes the Essex Senior League beckoned.

However, as so often in its history Clapton achieved notable firsts. Clapton were modern Aldershot's first league opponents while also featuring in Shot's first league victory and defeat.



	P	W	D	L	F	A	PTS	H	A
1 ALDERSHOT TOWN	38	28	8	2	90	35	92	2-1	2-4
2 THAME UNITED	38	21	11	6	84	38	74	5-1	1-1
3 COLLIER ROW	38	21	11	6	68	30	74	0-3	0-0
4 LEIGHTON TOWN	38	21	10	7	89	47	73	1-2	0-2
5 COVE	38	21	8	9	69	42	71	2-1	0-1
17 CLAPTON	38	8	7	23	46	74	31	-	-
18 CAMBERLEY TOWN	38	8	7	23	37	72	31	1-4	0-1
19 PETERSFIELD UNITED	38	6	12	20	36	90	30	4-0	1-1
20 FELTHAM AND H BORO.	38	5	4	29	47	119	19	1-2	1-4

PLAYER PROFILE: YACINE RABIA

BIRTHDATE: 30/04/1985

HEIGHT: 6ft

WHERE YOU LIVE: Leyton

DAY JOB: Sports Development Officer

PREVIOUS CLUBS: Leyton County FC, Leyton All Stars, West Green United and LOASS

ALL TIME FAVOURITE PLAYER:

The one and only Zinedine Zidane

FAVOURITE TEAM, APART FROM

CLAPTON CFC: Chelsea FC

BIGGEST HIGH IN FOOTBALL:

Winning the double with

Clapton CFC

LOWEST POINT IN FOOTBALL:

My West Green United manager passing away due to a serious illness was the lowest point for me.

LIKES AND HOBBIES: My favourite thing to do are Clapton, playing/coaching football, going to the gym, cycling, snowboarding and spending

time with family and friends.

DISLIKES: Brexit, Boris Johnson and Donald Trump

FAVOURITE COUNTRY VISITED:

My absolute favourite place in the whole world is stunning Croatia.

FAVOURITE FOOD: Italian cuisine

FAVOURITE FILM: This might surprise a few but my favourite film is The Notebook

FAVOURITE MUSIC: I like a verity of music genres from rap, pop to grime and classical music it depends what mood I'm in.

FAVOURITE TV: My favourite tv show is Hunted on channel 4

FOOTBALLING AMBITION: I would like to coach a team at a major international football event.

PERSON YOU'D MOST LIKE TO MEET:

There are a few people id like to meet but right now I'd say someone inspirational like Nelson Mandela.



PLAYER PROFILE: HARRIET PLOWS

PLACE OF BIRTH: London

BIRTHDATE: 14/11/1992

HEIGHT: 5ft 9in

WHERE YOU LIVE: Leyton

DAY JOB: Women and Girls Development Manager @ Access Sport

PREVIOUS CLUBS: Whetstone Wanderers, Camden, Leyton Orient

ALL TIME FAVOURITE PLAYER:

Lucy Bronze

FAVOURITE TEAM, APART FROM

CLAPTON CFC: Arsenal

BIGGEST HIGH IN FOOTBALL:

Getting promoted last season

LOWEST POINT IN FOOTBALL:

Misogynistic Referees

LIKES AND HOBBIES:

Wetherspoons, Cycling

DISLIKES: The central line

FAVOURITE COUNTRY VISITED:

New Zealand

FAVOURITE FILM: Bend it like Beckham

FAVOURITE MUSIC:

FAVOURITE TV:

FOOTBALLING AMBITION: Play on team with Lucy Bronze

PERSON YOU'D MOST LIKE TO MEET:

Lucy Bronze

CLAPTON CFC

WOMEN'S TEAM

GOALKEEPERS

POLLY ADAMS
SOFIA AXELSSON
SUSANA ROCHA FERREIRA

DEFENDERS

PHOEBE PARTHEWS
LAURA WRIGHT
ANNIKA QUARTEY
ALICE NUTMAN
GEORGIE BROPHY
HARRIET PLOWS
HANNAH WRIGHT
ALICE MAY WILLIAMS

MIDFIELDERS

CIARA MONAHAN
ANA HOLMES

ELENA HOLMES
LUCY SPOURS
LUCY ROLINGTON
ZHANE AMOATEN
ESTHER ROUTLEDGE
REBECCA VON BLUMENTHAL
VERITY PHILLIPS
CAPUCINE RIOM
ANEQUA PRESCOD WRIGHT
FLORA CANTACUZINO

FORWARDS

NAOMI SCRIVEN
EMILY LINK
SASKIA WALKER
STEDIKA PERKINS

MEN'S TEAM

GOALKEEPERS

JACK FRANCIS
DAN ANFOSSY

DEFENDERS

DEAN BOUHO
STEFAN KILRON
LIAM SMYTH
JORDAN ODOFIN
NICK LOBLACK
JUSTIN CUMMINS
ANDREW LASTIC

MIDFIELDERS

FAMA SANGARE
GEOFF OCRAN
CEMAL AGDELEN
BILAL HUSSAIN

BRUNO PEREIRA
ELICK COLEMAN
PRINCE KWAKYE
SHAM DARR
PAUL OSHIN
BILLY WISE
DEAN PENNANT
LOUIS RENE

FORWARDS

NOAH ADEJOKUN
JOSH ADEJOKUN
BOGDAN PANESCU
AARON YFEKO
STEFAN NIELSEN
MARLINHO
CHARLIE FAGAN
ELIOT CROSBIE
SHERWIN STANLEY

C.B. HOUNSLOW UNITED RES

- Jaden Alie
- Joshua Anderson
- Scott Churchill
- David De Sousa Pinto
- Jerome Edwards
- Rhys Forster
- Luke Gilbert
- Owen Hunte
- Nathan Kallah
- Craig Knight
- Jon Lloyd
- Tarell Macademia

- Andre Martin
- Barry McWilliam
- Ross Mullady
- Nathan Munroe
- Shane O'Connell
- Adeolu Owolana
- Mark Peters
- Alfie Saunders
- Levi Smith
- Mustapher Taleb
- Stephen Udeze
- Warren Williams

CRYSTAL PALACE DEVELOPMENT

- Aimee Ascott
- Emily Auld
- Marlena Ballia
- Sarah L. Callaghan

- Charli-Mae Goad
- Charlotte Greenwood
- Elisabeth Heyndrickx
- Eleanor Hutchings
- Emily Jacobs
- Ellie Johnson
- Saskia Kacary
- Tatian Kasujja
- Sophie Lee
- Tayla Lock
- Mia Lockett
- Kelsey Mugford
- Hope Mumford
- Stefania Paci
- Elena Paris
- Beau Parker

- Nicole Pepper
- Lily Price
- Lucy Robinson
- Morgan Searle
- Tia Searle
- Lauren Singleton
- Lacey Spriggs
- Iesha Swaby
- Rosa Tims
- Emily Treacy
- Aaliyah Weise-Forbes
- Kadelia Wilkins
- Alice Wood
- Maisy Wyer

NW LONDON FC

- Charles Custodio
- Phil Da Silva
- Cleber De Medeiros
- Danilo De Oliveira
- Andre De Sousa
- Inigo Dorronsoro
- Rayane Drissi
- Pedro Duraes
- Sham Falah
- Gabriele Ferrito
- Ezequiel Franchi
- Hassane Gassama
- Francisco Herrero
- Aaron Hylton
- James Jarouwit
- Lucas Jimack
- Sorin Muresan
- Daniel Pinheiro
- Joao Praes
- Wesley Ruivo
- Antwane Sabag
- Jorge Sanchez
- Guilherme Silva
- Joao Silva
- Oriol Almenara
- Abdul Taibi
- Marco Tavecchio

Information General enquiries: info@claptoncfc.co.uk **Membership:** membership@claptoncfc.co.uk

(£10 (£5 Concession) or £20 Solidarity) **Secretary:** secretary@claptoncfc.co.uk **Media enquiries:** comms@claptoncfc.co.uk

Address Clapton CFC, c/o CIU Offices, Durning Hall, Earlhams Grove, Forest Gate, London E7 9AB **Web** claptoncfc.co.uk

Twitter @claptoncfc **Print** tranquilityprint@gmail.com

Clapton CFC is a Community Benefit Society. Registration Number 7768