



VS
**Hereford
Palace**

2^{PM} SATURDAY
3RD NOVEMBER 2018
AT THE STRAY DOG



WELDON

WE ARE CLAYTON



Matchday Magazine No. 4 2018/19

If you've ever had dreams of owning a football club, you've come to the right place. With your first year of membership, you get a £1 share in the club and you can join our committees, keep our club going, and vote on important issues.

If you have any suggestions or want to lend a hand, page 10 has a list of all the committees and the emails to get in touch.

Enjoy the game. C'mon you Tons!

COME

APTON CFC



The Tons celebrate with the fans after the 3-1 victory over Epping Town in the last outing at The Stray Dog in the Anagram Records Trophy.

NEWS NEWS NEWS NEWS

Eat or Heat Food Bank

There has been a brilliant response to Clapton Community FC's first two food bank collections so we're doing it again today.

Eat or Heat are a brilliant community charity and we were happy to give a boost to their stocks as we start our temporary life in E17.

We spoke to Eat or Heat founder and chair Gary Nash after dropping off a donation.

"Eat or Heat was created in November 2011 as a response to the amount of families approaching my children's centre team, stating they could feed the children or pay the bills, but not both. We started to hand out a few items of food here and there and then realised the problem was much greater than we imagined.

"We became a registered charity in October 2013. Since the beginning we have seen referrals rise and never fall.

"The charity is run by amazing, dedicated volunteers, no one is paid a wage for any of the work they do. You can be sure that anything you donate, whether it's food or money will be used in your community.

"The main food items we always need are canned meat (stew, curry, chilli con carne, ham, corned beef etc) and canned veg (peas, carrots, potatoes, sweetcorn etc).

"This year we will be launching a bag for the homeless/rough sleepers in the area and are encouraging people to knit for us. Christmas is also approaching fast and we will be asking again for "seasonal" donations so we can make our client's Christmas a little bit better."

You can drop off donations to Eat or Heat at any time at these places across E17: eatorheat.org/dropoff/

Newham Bookshop

Last Sunday evening, a cheque for £673.40 was presented to Newham Bookshop for its "Two Doors Down" crowdfunding appeal on behalf of CCFC and Walthamstow FC.

The total was raised by the 290 fans who came to our Friday night friendly on 12 October at Wadham Lodge after both clubs agreed to donate the proceeds.

Newham Bookshop is the only independent bookshop in CCFC's home borough and has been serving the communities of east London for 40 years. Founded in 1978 to provide a source of books, education and play materials for the fledgling Newham Parents' Centre, which for many years had its offices and teaching rooms upstairs.

Half of the shop, on Barking Road near the bottom of Green Street in Upton Park, remains dedicated to children's books.

However, it also has a particular reputation for offering books on politics, local history and by black writers and for regularly taking authors into schools to read their books.

For many years, it has also provided bilingual dictionaries for each of the new communities that arrive in Newham.

Recently, its landlord decided to develop the upper floors of one half of the building that the bookshop occupies into offices, including one-third of the adult books area. This would have caused massive disruption.

However, the empty shop next door to its children's section became available and so the bookshop plans to move the entire stock of books for adults two doors down to 743 Barking Road in time for Christmas.

In order to make this possible, Newham Bookshop needs to raise around £25,000 to cover new heating, lighting, power and fittings for the new premises.

Along with the donation from Clapton and Walthamstow supporters, Sunday's launch event at the Wanstead Tap in Forest Gate raised around £3,000 from an auction of signed copies of books, generously donated by authors and publishers to kickstart the fundraising campaign.

To donate to the "Two Doors Down" campaign, visit www.crowdfunder.co.uk/two-doors-down

Today's Cover Art

CCFC bringing down the Palace was brilliantly created by Bryan Mayes. Check out his work over on Instagram: @bartcollective.

If you are an illustrator/designer/artist/photographer and want to design a cover for one of the remaining programmes this season, email us at comms@claptonfc.co.uk or via Twitter or Instagram.





A WORD FROM THE GAFFER

The 3-1 win over Epping Town in the Anagram Records Trophy two weeks ago was probably our best all round performance of the season.

We went into the match with a game plan having played them in pre-season and I thought the players did exactly what was required plus more.

We knew they would play it long, put strong tackles in, get in the ref's ear. We competed with them on that level, but also played our own way, from the back.

When a game plan comes off like that, it's perfect. They couldn't live with us at times. We were solid defensively and there were lots of chances created.

With the fixture list giving us a free week, we opted for an in-house game last Saturday so we could look at a few fringe players and trialists and also give more minutes to other first teamers.

From the feedback from my assistant manager Stuart Purcell and club captain Andrew, Lastic; there were lots of positives to take from the game and selection headaches going into the Hereford Palace game.

It's good to get back to league action and a chance to get more points on the board. Another performance similar to the Epping game and I can't see any other result than a Clapton CFC victory



PHOTO Max Reeves

The sun gods finally decided to make their way over to E17 for a Tons home game, which helped bring out a huge family-friendly crowd for the first round of the Anagram Records Trophy against Epping Town.

There was noise from two sides of the ground with a large bloc of the Brigata Italiana behind the goal singing throughout the game, while down the side, no gazebos needed in the autumn heat.

Player-manager Geoff Ocran gave a competitive debut to new defender Jordan

Odofin, who had impressed in the friendly at Walthamstow FC, while he was forced into some changes up front too with Eliot Crosbie and Stefan Nielsen unavailable.

The crowds didn't have to wait long to start seeing chances on goal, with Epping Town making an early attack, getting off a shot blocked with an acrobatic diving save from Tons' keeper, and part time capo, Vlad Bendovsky. He was required to make several more stops in an evenly matched opening fifteen, with Clapton CFC making a few

Sherwin Stanley knocked the ball down and it was a simple touch for Josh Adejokun to guide it into the net.



chances of their own through speculative runs on the wings.

There was a slight worry at the fifteen minute mark as Vlad pulled up with an apparent injury just after clearing the ball from another Epping attack. The club physio was called on and it was a nervy few minutes for a Tons team that had no substitute goalkeeper before he was back on his feet. Relief all round.

After the short injury break, Clapton CFC began to apply more pressure to the Epping defence. A scramble on the right side of the box saw the ball hit high over the Epping keeper, Sherwin Stanley knocked the ball down and it was a simple touch for Josh Adejokun to guide it into the back of

the net. The 356 strong crowd erupted as the deadlock was broken, 1-0.

The Tons had their tails up and started making more chances. Stanley made a dash through the Epping defence and hit the ball just wide across the goal from a tight angle. A chance almost fell to Louis Rene who was able to get his foot to a mid-air ball but was stopped by the body of a defender.

However, it was Liam Smyth who was able to convert after being left with acres of room on the left hand side of the pitch. He was in a one on one situation with the keeper and neatly slotted it to the right for Clapton's second.

From the restart Epping made a couple of speculative runs, with their number 10 striking a shot over the bar. On the next play a long pass came into the number 7 who had managed to make space for himself but was unable to stretch far enough for the ball as it sailed wide.

After a shaky couple of minutes, Clapton turned the dial up once again and during an extended spell of play in the Epping box, Stanley headed a ball straight at the keeper from close range, this forced a rebound which was netted off the head of Adejokun for his second of the afternoon.

In the dying minutes of the half, Clapton were briefly reduced to ten men as Dean Bouhu was cut down by an opposition striker in the Tons penalty box and Epping's number 9 earned a yellow card for shoving. Nevertheless, Clapton went into the half time break holding onto their three-goal lead.

Epping needed to repeat their feat from a friendly between the two sides earlier in the season where they had managed to come back from 3-1 down at half-time to draw 4-4.

With Clapton playing into the glare of the setting sun, Epping pushed early with their number 7 making a good run on goal from the right hand side. However, he was quickly shut down by an on-rushing Bendovskyy.

Epping tried to use their size to out-muscle Clapton and on 55 minutes Adejokun was brought down and winded outside the Epping box. Assistant manager Stu Purcell used this opportunity to sub him off.

CONTINUED OVER >>>



Epping had a good chance to pull back a goal at 65 minutes with a free kick on the edge of the box. The number 17's strike was well hit and curled over the defensive wall before sailing just over the top right of the goal.

Just over ten minutes later Clapton had their own chance from a similar position. Ocran hit a great ball into the centre of the Epping penalty area, however none of the three onrushing Clapton attackers were able to connect with it to seal the win.

With just minutes left in regular time, Epping revived their hopes when an attacker was brought down on the very edge of the Clapton area. The call was close but definitely the correct one from the referee.

Number 10 Harry Watkins placed the ball on the spot, facing Bendovskyy and a mass of CCFC fans making extra noise from behind the goal. However, his nerves held out and though Bendovskyy dived the right way, he couldn't get enough on it to keep it out.

Epping quickly grabbed the ball and dashed back to the centre spot for the restart hoping for an unexpected comeback,

but throughout an unusually long period of injury time, it was Clapton CFC who were applying the pressure to try and make it four.

A cleared ball fell perfectly for Smyth on the left hand side, who brought it down with one touch and fed it across to Stanley who volleyed the ball into the net, however the celebrations were stymied by the lino's flag and the goal was disallowed.

In the last minute of the game, sub Romelle Pile made a bold pitch length run, however was held out by a defender and couldn't get a good strike away.

After an injury time period that seemed to last an eternity, the ref finally blew his whistle and the jubilant younger Tons fans celebrated on the pitch with their team in the late afternoon sunshine.

A disappointed Epping Town manager Billy Cove said his team was "second best all over the pitch".

He added: "Was really impressed with Clapton CFC yesterday, well organised on and off the pitch, the fans really are the 12th man."

OUR FIRST GENERAL
MEETING OF THE
SEASON HAPPENED
LAST WEEK. WHY
WEREN'T YOU THERE?
MAYBE YOU'RE NOT A
MEMBER? WHY NOT??
SIGN UP AT
CLAPTONCFC.CO.UK
AND HAVE YOUR SAY IN
HOW OUR CLUB IS RUN.

CLAPTONITES OF THE WORLD, UNITE!

International Committee in Focus

international@claptoncfc.co.uk

If you simply want to know more about CCFC, you can email any of the committees at the following addresses:

Communications:

comms@claptoncfc.co.uk

Fundraising:

fundraising@claptoncfc.co.uk

Men's First Team:

mensfirstteam@claptoncfc.co.uk

Ground Maintenance:

ground@claptoncfc.co.uk

Match Day:

matchday@claptoncfc.co.uk

League Liaison:

leagueliaison@claptoncfc.co.uk

Training:

training@claptoncfc.co.uk

Community Outreach:

community@claptoncfc.co.uk

Finances:

finance@claptoncfc.co.uk

International:

international@claptoncfc.co.uk

Accountability:

accountability@claptoncfc.co.uk

Given the media coverage and the fame our Club received in the past months, we had a huge number of people from all around the world who wanted to know more about our club and (of course about our shirt).

In the past as Clapton fans we made a lot of friends around Europe and the world both on the basis of our common political views and the way we see football. We felt that experience was really important and it enriched all of us, so we felt ready and with a good baggage to start working in the same direction of building bridges.

The International Committee was set up in September 2018 to:

1. Build relationships and liaise with football clubs and supporters groups internationally who share our ethos and values.
2. Coordinate visits to the club by supporters from overseas and by CCFC members representing the club on international visits.
3. Facilitate international CCFC members outside of England wanting to set up and run local supporters groups or networks.
4. Act as the main contact point for international organisations sharing our ethos and values, such as Football Against Racism in Europe.

The Committee is currently comprised of 10 members - with half of the members based or from other countries than UK.

The first action we took was has been supporting Atletico San Lorenzo campaign #IlCampoNonSiTocca you probably read about on CCFC blog or our latest match programme. A copy of this programme and a letter of support was been sent to Atletico San Lorenzo on 25th October 2018.

We'll also try to be the point of contact for international supporters who will come visit us in London, trying to arrange hospitality, help with directing them to the ground, looking after them before and after games.

Join us for a chance to get in touch, meet many new like minded people help grow the club around the world!

Please email international@claptoncfc.co.uk for an informal chat

CLAPTON COMMUNITY FC

WE ARE THE CLAPTON

N O P A S A R A N



**GMB Union are in full support of the fan-owned
Clapton Community Football Club and
wish them a successful first season 2018/19**

Warren Kenny
Regional Secretary

Penny Robinson
Regional President

#WeAreTheClapton **www.claptoncfc.co.uk**

JOIN ONLINE
www.gmb.org.uk/join

www.gmblondon.org.uk



GMBLondonRegion



@GMBLondonRegion



With no game, last weekend a training match was played at Wadham Lodge, Suffice to say that the game finished with a win for Clapton.

T O N S U



TONS

Top (L-R): Stu Purcell (Assistant Manager), Jon Akaly, Louis Bacon, Tom Carding, Liam Smyth, Louis Rene, N/A, Stefan Kilron, Ashley Headley, Dan Anfossy, Stefan Nielsen, Tré Cartier, Phil Blakesley, Robert Gheorghiu, Callum Keir.

Bottom (L-R): Imran Rehman, Ben Kadler, Lewis Owiredun, Bogdan Panescu, Maxwell Nwofor, Andrew Whorms, Jordan Odofin, Andrew J. Lastic, Jake Stevens, Shaun Duckett (physio).



HIGH FIVES ALL AROUND TO CLAPTON COMMUNITY FC

**FOR TAKING A STANCE AGAINST
RACISM AND HOMOPHOBIA**

You've seen the film
"Pride"

now you can buy the iconic t-shirt for
£12.99 + £2.00 P&P (UK)

Available in sizes from XS to XXL

Printed on Continental Clothing's
"Earth Positive" Tees.
100% Organic, 90% Reduced
carbon footprint, Fair Wear
certified. Screen Printed by
Sabcat Workers Co-operative.

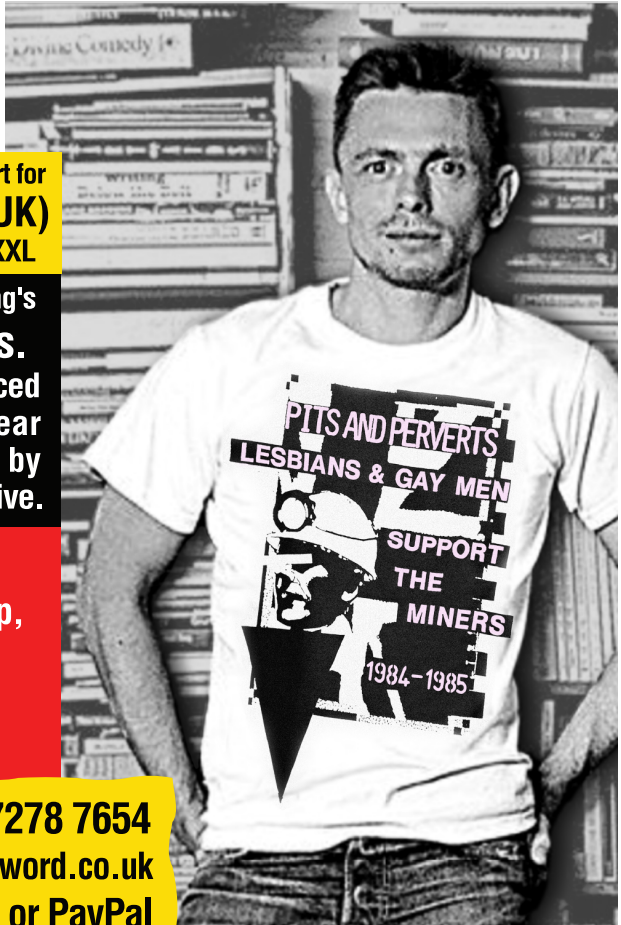
Available from:-

Gay's the Word Bookshop,
66 Marchmont Street,
Kings Cross, London,
WC1N 1AB

Order by phone - 020 7278 7654

Or email - sales@gaystheword.co.uk

Pay by credit/debit card or PayPal



Lesbians and Gays Supports the Miners continues to support workers in struggle
in Britain & internationally through t-shirt sales, including:- TGI Fridays &
McDonalds Strikers, The Orgreave Truth and Justice Campaign and Lesbians &
Gays Supports the Migrants.

Solidarity Forever!

TRANSPARENCY

September 2018

The Board

Thomas Daniel Bleasdale

Evanthia Georgiou

Jack Glover Gunn

Secretary

Matthew Cunningham

Martin Silver

Robin Cowen

Paul Rutherford

Kevin Blowe **Treasurer**

Christopher Patrick Tymkow

League Representative

Gary David Price

Latest Financials

After the large amount of shirt orders, and funds, which were received at the end of August, the amount of expenditure in September has dramatically risen. The largest amounts were instalments to Rage Sports so that they could start producing the kits to fulfil all the orders we had received. This isn't the full amount we had to pay for all the orders as the payments were staggered so will appear on future month's expenditure as well. There was also extra costs incurred due to the rise in membership which meant that more badges and share certificates had to be printed.

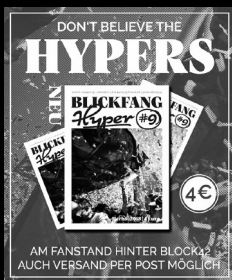
Aside from this, the rest of the expenditure related to general running costs for the club; with programme printing costs, a banner for The Stray Dog and a machine to help us count all those coins you are kind enough to donate among them. The Finance Committee are working with our appointed accountants to finalise all our tax commitments in both the UK and Spain and will update the wider membership accordingly.

Contact: finance@claptoncfc.co.uk

Expenditures (September 2018)

Upgrade subs to online membership software	£ 64.77
Purchase of coin scale	£ 54.99
Envelopes for membership packs	£ 56.37
Payment to Rage Sports for shirt manufacture	£40,448.99
Banner for Stray Dog	£ 77.16
Payment for Physio	£ 80.00
Payment for security	£158.40
Payment for training kit	£34.90
Payment for physio bag	£58.78
Additional members badges	£ 374.40
Additional membership cards	£ 114.00
Printing of match programmes	£ 218.00
Payments to match officials	£176.00
Food for players	£60.00
Postage	£119.21
TOTAL	£42,095.97

HYPE IN DÜSSEL



"Hypers 2001", a Fortuna Düsseldorf ultras group, published the fanzine "Blickfang Hyper" for many years.

It started as a one-person punk project and then made it to eight issues full of politics, Fortuna, left-side projects and a lot of satire about ultras and football.

The last release has been published four years ago, but the Hypers 2001 decided to start it again this season and wanted Clapton CFC to be part of it!

Here's the article that appeared in full...

Hello and much love from Düsseldorf!
Thanks for taking your time for some questions about the situation in East London. For years now there has been deep conflicts between fans of Clapton FC and the club's leadership. A lot of things happened in these stressful days, but could you describe which developments in recent past have led to the foundation of Clapton Community FC?

From the early 2000s, Vince McBean took over Clapton FC and the charity which controls its historical ground, The Old Spotted Dog. This had disastrous consequences on the ground (left in despair and lacking even the basic maintenance), the club both on the pitch (there is no more youth teams) and off the pitch (the members club has been closed, members don't have a voice in the running of the club and even life members got kicked out).

For years Real Clapton FC (an association of former members, officials, life members and new fans of Clapton FC) tried to save both the Club and the Old Spotted Dog and they ended up calling a permanent home games boycott in April 2017. That month Vince McBean declared the charity Newham Leisure Trust in liquidation with a debt of £200'000 despite the record attendances the club had in the previous 5 seasons to escape the investigation of the Charity Commission.

The move put the ground in the hands of a liquidator and at risk for its future. The effort of the members of Real Clapton FC were proved successful when the liquidation was halted, Charity Commission moved on with its investigation quicker and RCFC received the support of many including local councillors, the local mayor and the local Member of Parliament.

Parallel to the battle for the OSD there still was a football team playing on the pitch and RCFC decided it was time to stop following VMcB club. That wasn't the Clapton we wanted nor we recognised, neither us nor the life members who then supported RCFC decision to start a new club they recognise as the continuation of Clapton FC tradition, following its values and statutes: Clapton Community FC.

Especially in England a lot of fan-owned-clubs were founded in the last years. We all know how the destructive development within the english system expelled most fanculture out of the stadiums and how disappointed most fans are. Can you describe why so many fan-owned clubs are emerging here? Is it hard to be a football fan in England these days?

Probably one of the biggest issues in modern british football is the price of tickets which isolated and excluded the typical sport fan in England. Working class people can't afford tickets for matches of teams they supported all their life. If they can they find themselves obliged to obey to the strictest rules and repressive forms of crowd control. It's not possible to smoke, drink alcohol, use any kind of smoke pyro or flare, in most cases it's even not allowed to stand and to move from the assigned seat in all sections of the stadium.

At the same time the power of Pay TV keeps shaping the professional football and it forces fans to crazy mid week away days and it is flooding the Premier League with millions of pounds leaving the non league with few or no money. Many small local football clubs struggle to survive and many disappear every season. Others had their ground taken over by developers who are planning to build flats on them (see the problems Dulwich Hamlet FC are facing at the moment).

DORF

All these problems could be solved listening more to the fans and give them a platform and a voice to raise their issues.

We're trying to reclaim the sport through the club and the ground which belongs to us and our history and hopefully more people will do this. Many others did in the past already and we are honoured to be mentioned as similar to Enfield Town F.C., FC United of Manchester, Lewes FC, AFC Wimbledon...

In the past years you have shown on many occasions how important a connection between football club, fans and the people in the neighborhood is. You supported political institutions, organized anti-racist tournaments and collected donations. How do you import these ideals and vision into the CCFC? What kind of people supporting your project?

As many of the people involved in CCFC were member of Clapton Ultras we kept the same approach and organisation which proved successful in the past.

CCFC is structured on committees which work in parallel and independently on different subjects. One is the Community Outreach Committee which tried to keep working on campaigns close to the cores of the club.

For our first competitive home game we got in touch with a new (having changed ground temporarily) local food bank -Eat or Heat- to collect donations and we joined the On The Ball campaign to provide free sanitary products at our games. We are working on projects with FARE, various unions, charities and groups but we're still at early stages of the club so it's all shaping. The group of people who joined the committee (and the club) is extremely homogeneous and it's interesting that as a club rather than ultras you can attract people who were on a side earlier and can now find a space to work on what they care.

At the same time we're trying to keep our relationship with Forest Gate (where the Old Spotted Dog is) strong. We had a stall at both Forest Gayte Pride and Forest Gate Festival to inform the community about the legal issues with the OSD and to listen their proposals, ideas, suggestions on the issue. We also organised an open public meeting with the community and football fans about it to involve as many people as possible.

This led to really good contacts from institutions as well as mentioned above.

Beside from your organisation form the CCFC plays again in the same league system like all the other clubs too. In this competitive system, fan-owned-clubs will most likely soon reach their limits when it comes to awarding venues, the need for sponsors, funds, etc. Are you optimistic about the future of CCFC? Do you believe fan-owned-teams can be a real option for people who demand free spaces and a football for everyone?

Football needs to change. The sport is ill to its deeper core and fans are forgotten and only used as customer and to squeeze money out of them.

The change can be a radical approach like fans owned grassroot clubs (in Italy this is already happening a bit everywhere around the country). There is examples of fans owned clubs which progressed in the pyramid in UK (FCUM, AFC Wimbledon, Enfield Town FC...) and they definitely had to make difficult choices.

There is also many different levels of critical and radical approach to the issue. One big choice to make could be the one of football results: how high do the fans want the club to progress? Clapton FC has always been an amateur non league team since 1878; would it be right to turn it into a league club?

Also what is really beneficial for the community? A rich club focussed on few goals or a well structured and smaller one which can organise smaller and frequent campaigns? There is no right way of doing it. The only goal generally is to give more power to the fans. It will be up to them what the results will be.

Thank you for the interview. The last words are yours.

Another football is possible, it's just up to us to make it happen!

HISTORY

Where's Leverstock Green?

Clapton and the FA Cup 1884-2017.

by Gary Price

The FA Cup is the oldest and most famous club competition in the world. Hundreds of teams now enter every season, though only a few have a realistic chance of glory at Wembley. The rest hope to progress beyond the early rounds of late summer, boost their finances and maybe cause a giant killing.

The first FA Cup was contested by 12 teams in 1871/2. Wanderers, Clapton's first opponents at The Stray Dog, were the first winners defeating Royal Engineers 1-0 at The Oval cricket ground.

Clapton formed in 1877, first entered the competition in 1884, losing its first FA Cup tie 3-2 at Romford. With the exception of 1956/7 and 1974/5, Clapton have entered every subsequent competition, experiencing more woe than joy.

In 1885 Clapton recorded its first victory, winning 1-0 at Hendon. The joy was short lived as disqualification followed in the next round after drawing 1-1 with South Reading. This was not to be the last time that Ton were denied progress due to a technicality.

It was not until 1889 that The Dog witnessed a home victory, Rochester succumbing 4-1. A walkover against the Old Brightonians was followed by a 6-1 victory at Old St Pauls. Progress was then halted at Small Heath, later Birmingham, of the Football Alliance.

The Football Alliance had been formed as an alternative to the Football League, and was soon to become the second division. Clapton yet to play any league football acquitted itself well in the Midlands, losing 3-1.

Unfortunately the same could not be said the following season when Ton lost to another Alliance team, Nottingham Forest, by 14-0 at The Dog!

Second division Woolwich Arsenal became Clapton's first Football League opponents in 1893. Ton's journey over the river resulted in a 6-2 defeat at The Manor Ground.

In 1898 after defeating London League Brentford 6-1 at The Dog, Ton met Southern League Tottenham Hotspur. At the time the Southern League was considered to be on a par with the Football League, so a 1-1 draw in front of 12,000 at the Dog was a fine achievement. Tottenham nervously progressed by the odd goal in three in the replay.

Clapton Orient were Ton's next Football League opponents in 1905. Ton's neighbours who were to finish bottom of the second division that season won 2-0 before a crowd of 4,000 at The Dog.

The 1920's proved to be the most successful decade in Clapton's history. Apart from an Isthmian League title and two FA Amateur Cup Final wins, Clapton enjoyed memorable FA Cup runs. In 1922/23, after victories over Gnome Athletic, Custom House, Leytonstone, Barking, and Dulwich Hamlet, Ton travelled north to New Brighton (a Lancashire Combination team soon to enter Football League Division Three North) and defeated their amateur opponents 2-0.

The decade saw Ton do battle with six league teams all from Division Three South:

1923/4 Lost 1-3 to Southend United at home (Upton Park)

1924/5 Lost 0-2 to QPR at home after a 4-4 draw.

1925/6 Beat Norwich City 3-1 at home.

Lost to Swindon Town 2-3 at home (Upton Park)

1926/7 Lost to Brentford 3-7 after a 1-1 draw at The Dog.

1927/8 Lost to Luton Town away 0-9

The Swindon Town tie drew a crowd of 27,100 to Upton Park. To put this into context, this figure was exceeded only once at Upton Park that season when first division Irons

entertained Spurs. Ton who were to finish 3rd in the Isthmian League pushed Swindon, enjoying a good season themselves, all the way. Three goals down after 70 minutes, Ton netted twice late on to almost force a replay in the west country.

Little did anyone know at the time that success in the FA Cup was to become increasingly elusive. After the glories of the 1920's Clapton experienced a gradual decline, as poor cup performances mirrored deteriorating league form. Early exits became the norm until the memorable cup run of 1957/8. Casting aside mediocre league form, occupying its normal bottom half position, Ton fought through five rounds before losing to Division Three South, QPR:

- Preliminary Round** Shefford Town 2 Clapton 8
 - 1st Qual Round** Clapton 3 St Albans City 1
 - 2nd Qual Round** Enfield 2 Clapton 3
 - 3rd Qual Round** Clapton 2 Ware 0
 - 4th Qual Round** Clapton 3 Bury Town 2
 - 1st Round** Clapton 1 QPR 3 (after a 1-1 draw at the Dog).
- QPR to date are the last league opposition to have played Clapton in the FA Cup.

Since 1958, defeats have far outstripped victories for the team from E7. Even a rare victory over Leytonstone/Ilford in 1985 was reversed due to a rule violation - shades of 1885.

The nadir was reached between 2005 and 2013, when a run of 8 successive defeats was halted when Stanway Rovers were defeated 1-0 at The Dog.

So while cup glory has been fleeting for Clapton , we have had our moments. And Leverstock Green? Its a village near Hemel Hempstead, and Clapton won a preliminary round tie there in 1951, just one of many teams that Clapton have faced in its long history and enduring with the FA Cup.

CLAPTON'S FA CUP RECORD UP TO 2017

Home						
P	W	D	L	F	A	
119	50	16	53	215	213	

Away						
P	W	D	L	F	A	
116	36	14	66	187	283	

Total						
P	W	D	L	F	A	
235	86	30	119	402	496	

Record Home Win
Maidstone 8-1 1900

Record Away Win
Shefford Town 8-2 1957

Record Home Defeat
Nottm Forest 0-14 1890

Record Away Defeat
Luton Town 0-9 1927

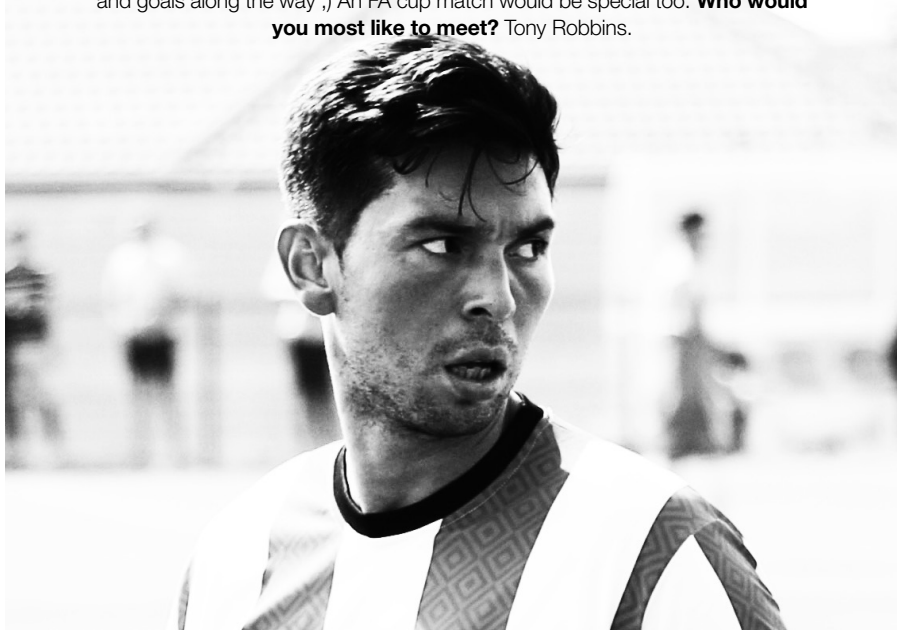


PHIL BLAKESLEY

Full Name Phil James Blakesley **Place of Birth** Lincoln **Birthdate** 15/12/1986
Height 6"3 inches **Weight** 13.5st (85kg) **Home** Stoke Newington, Hackney **Day job** Account manager/Football coach for Arsenal in the Community **Previous clubs** My most recent club in London were called Wojaks **Favourite player** The original Ronaldo (R9) and now Messi **Favourite team, apart from CCFC** Arsenal **Most memorable match played in** Trial game for a scholarship where I scored a 40-yard volley **Favourite ground played at** Emirates **Biggest high in football** Acquiring scholarship to USA. Goal of the season/top assister winner. Signing for Clapton CFC. **Lowest point in football** Missing a penalty in a cup final. **Likes and hobbies** Apart from anything to do with football; reading, films, keeping fit, socialising, visiting hot countries. **Dislikes** The cold and fascists. **Favourite charity** St Joseph's Hospice (I raised over £1,000 earlier this year for them). **Favourite country visited** Colombia - I am half Colombian, so am slightly biased ;) **Favourite food** Italian or Mexican. **Favourite music/performers** Nas. **Favourite TV shows** The Wire, Peep Show, Match of the Day. **Favourite film** Quentin Tarrantino films or Goodfellas. **What you love about football** Passion, community, team spirit. **What you hate about football** Losing or injuries. **Biggest influence on you** My mum, sister and brother in law. **Footballing ambition** Back to back promotions with Clapton - chipping in with a few assists and goals along the way ;) An FA cup match would be special too. **Who would you most like to meet?** Tony Robbins.

PLAYER

PROFILE



SQUAD SPONSORS

If you want to sponsor a player for the season for £25 and include a message of support in the programme, get in touch with us at: fundraising@claptoncfc.co.uk tell us who you're after and what you want to say and we'll be in touch with payment details.

Goalkeepers

Daniel Anfossy

Gravy Ultras aka CCFC
Northern Supporters.

Vladyslav Bendovskyy

Keep 'em out
keeper.

Martin

Defenders

Andrew Lastic

Good luck,
skipper.

From CCFC Northern
Supporters aka
Gravy Ultras

Dean Bouho Available

Ellick Coleman Available

Ethan Dixon Available

Liam Smyth

... and we both
looked at each
other and said
"Bobby Moore!"

J

Yacine Rabia Available

Ashley Headley Available

Romelle Pile

Keep it up!

East London Workers
and Peasant's Red Army.

Tom Carding

Monday Night
Football's very
own has made
it to the big
leagues!

TB

Midfield

Callum Keir Available

Geoff Ocran

C'mon Geoffrey
Ocran, score a
goal for George
and Charlie.

Jai Bhogal Available

Joshua Adejokun

Fly down
that wing.

Paul Rutherford

Maxwell Nwofor Available

Stefan Kilron Available

Paul Oshin Available

Prince Kwakye Available

Phil Blakesley

Best of luck for
the season.

The Homer Tons
A&E Disco Division

Louis Rene

Louis Rene -
the only good
thing about the
right wing

Paul HL

Sham Darr

Thatcher Died
Alone

@thisGRAEME

Nabeel Hashim

Keep on
keepin' on!

The Irn Bru Cru

Attack

Bogdan Panescu

Forza Clapton!

Danny Daly

Eliot Crosbie

Wishing you a
great season
and lots of
goals - Come
on you Tons.

Stan, Austin and Cole

Stefan Nielsen

Tons' very
own Michael
Laudrup.

Gary Price

Gabriel Ogunwomoju

Available

Jon Akaly Available

Charlie Fagan Available

Saïd Jaffa Available

Sherwin Stanley Available

OPPONENTS

Hereford Palace

There can be no glossing over it, it's been a massively tough start to life in the football pyramid for Hereford Palace.

The brand new Wormwood Scrubs-based side started the Middlesex County Football League season with a whopping 18-0 (yes, EIGHTEEN) defeat at home to NW London.

A frustrated club spokesman told us that everything which could go wrong, did go wrong.

"It was one of those games to forget," he told us. "We only fielded 11 players, without any subs, and lost 2 players within 12 minutes. It all went downhill from there.

"The only way we could continue was to play the keeper outfield and stick an injured player in between the sticks. All in all a game to forget but take nothing away from NW, they're a great team,"

You have to admire Hereford Palace's spirit to keep battling on from that body blow. The scorelines HAVE improved since, culminating in a much closer 4-0 defeat away at league leaders Stonewall FC in their last game.

It's clear they are getting more competitive and experienced with every passing week, having largely kept faith with the same players throughout the season.

The challenge they will pose Clapton CFC, buoyed up in front of a crowd, should not be underestimated.

However, the Reds have lost all six matches so far - four in the league, two in the cup - conceding 55 in the process and only scoring twice, both for Jeffrey Larry, who is also club treasurer.

The club are quite realistic about their nightmare start to the season so far: "Poor preparation and starting a team from scratch with no experience whatsoever was bound to throw a few dirty results our way."

As for the name Hereford Palace, the founders are neither Hereford fans, nor Palace fans, they just liked how the name sounded. "It was the name we first used when we entered football tournaments before joining a league and it just stuck."

MATCH CENTRE

RESULTS

2018/19 Season

Cherry Red Records Middlesex County Football League Division 1 unless stated

- Sep 15** Ealing Town FC 1 **CCFC 2 (Smyth, Oshin)**
BBC Essex Premier Cup Round 1
Sep 22 **CCFC 4 (Oshin, Crosbie, Stanley 2)** Hutton FC 5
Jim Rogers President's Division One Cup
Sept 29 South Kilburn Reserves 2 **CCFC 4 (Crosbie, Bouho, Nielsen 2)**
Oct 6 **CCFC 4 (Stanley 3, Bouho)** FC Roast 4
Oct 12 Walthamstow FC 1 **CCFC 0 Friendly**
Anagram Records Trophy Round 1
Oct 20 **CCFC 3 (Adejokun 2, Smyth)** Epping Town FC 1

FIXTURES*

- Nov 3** **CCFC** v Hereford Palace 2pm
Anagram Records Trophy Round 2
Nov 10 Letchworth Garden City Eagles v **CCFC** 3pm
Jim Rogers President's Division One Cup
Nov 17 FC Deportivo Galicia Reserves v **CCFC** 1.30pm
Nov 24 London Samurai v **CCFC** 1.30pm
Dec 1 **CCFC** v Eastfield FC 2pm
Dec 8 The Curve v **CCFC** 2pm
Dec 15 **CCFC** v Ealing Town 2pm
Jan 5 **CCFC** v Wilberforce Wanderers 2pm

*All fixtures are subject to change so please check our website for the most up-to-date list.

LEAGUE TABLE

	P	W	D	L	F	A	GD	Pts
1. Stonewall	4	3	1	0	11	2	+9	10
2. London Samurai	3	3	0	0	10	0	+10	9
3. The Curve	5	2	1	2	12	10	+2	7
4. NW London	3	2	0	1	21	3	+18	6
5. Wilberforce W'ers	4	1	1	2	16	13	+3	4
6. Eastfield	3	1	1	1	10	7	+3	4
7. CLAPTON CFC	2	1	1	0	6	5	+1	4
8. FC Roast3	2	1	1	0	7	9	-2	4
9. Ealing Town	5	0	2	3	8	12	-4	2
10. FC Star London	0	0	0	0	0	0	0	0
10. Sporting Club	0	0	0	0	0	0	0	0
12. Hereford Palace	4	0	0	4	2	42	-40	0

Unite the union London & Eastern

IN SOLIDARITY
with
CLAPTON
COMMUNITY FC

Racism and hate have no
place in football.

We stand for hope.



Join us: unitetheunion.org

 Unitetheunion  @unitetheunion  UniteTheUnion

Unite regional secretary Peter Kavanagh

CLAPTON CFC

GOALKEEPER

Daniel Anfossy
Vlad Bendovskyy

DEFENCE

Andrew Lastic
Ashley Headley
Dean Bouho
Ellick Coleman
Ethan Dixon
Jordan Odofin
Liam Smyth
Romelle Pile
Tom Carding
Yacine Rabia

MIDFIELD

Ben Kadler
Callum Keir
Geoff Ocran
Jake Stevens
Joshua Adejokun
Louis Rene
Maxwell Nwofor
Nabeel Hashim
Paul Oshin
Phil Blakesley
Prince Kwakye
Sham Darr
Stefan Kilron

ATTACK

Bogdan Panescu
Charlie Fagan
Eliot Crosbie
Jon Akaly
Saiid Jaffa
Sherwin Stanley
Stefan Nielsen
Tashan Benjamin
Tre Cartier

EPHING TOWN FC

Kamran Ahmed

Damario Allen- Bryan
Olatunde Olalere Anthony
Kenneth Asihene-Twum
Brandon Beckford
Justice Jordan Duodu-Dapaa
Unnis El-Hage

Edson Gomes

Mohamed Hussein
Noor Islam Khan
Jeffrey Larry
Tasila Mngwali
Daishain Moise
Paul Oyalegan

Jesse Richard

Ziaur Rahman Salik
Rami Shamel
Tyrone Spence
Malik Vidal
Walid Zamzam

Information General enquiries: info@claptoncfc.co.uk **Membership:** membership@claptoncfc.co.uk
(£10 (£5 Concession) or £20 Solidarity) **Secretary:** secretary@claptoncfc.co.uk **Media enquiries:** comms@claptoncfc.co.uk **Address** Clapton CFC, c/o CIU Offices, Durning Hall, Earlham Grove, Forest Gate, London E7
9AB **Web** claptoncfc.co.uk **Twitter** @claptoncfc **Design** @weareAcidFC **Print** dpx-print-solutions.com